



C.H. Symington & Co., Inc.

S-66 TRIPLE ACTION FOUNDRY TORCH

- Remove defects
- Wash pads with ease
- Perform general purpose cleaning operations



- Deeper, cleaner gouge
- Less slag removal
- Faster operating time

Made in U.S.A.



S-66 FOUNDRY TORCH

The SYMEX S-66 torch is engineered for heavy foundry applications. It is actually a triple action torch.

The S-66 consists of a heavy duty body that can accommodate heads to:

- remove defects
- wash pads with ease
- perform general purpose cleaning operations

The S-66 can be equipped with either a standard 7' air-cooled cable or a 7' water-cooled cable. An optional 10' air-cooled or water-cooled cable is available.

The S-66 torch can be equipped with an air-valve or can be purchased with no valve. With the no-valve torch, the air consumption is 65cfm which means faster metal removal. With an air-valve, the air consumption is 50cfm.

The 340° swivel cable supplies both power and air to the "Triple Action" torch. It prevents cable twisting minimizing cable damage. SYMEX cables are made of the highest quality material available.

The water-cooled cable is non-swivel. It is designed to allow the flow of water around the copper conductor, minimizing overheating during heavy gouging applications.

The SYMEX "Terminator Head" is a standard feature on six S-66 models (30036, 30046, 30056, 40036, 40046 and 40056). This unique head design concentrates air for:

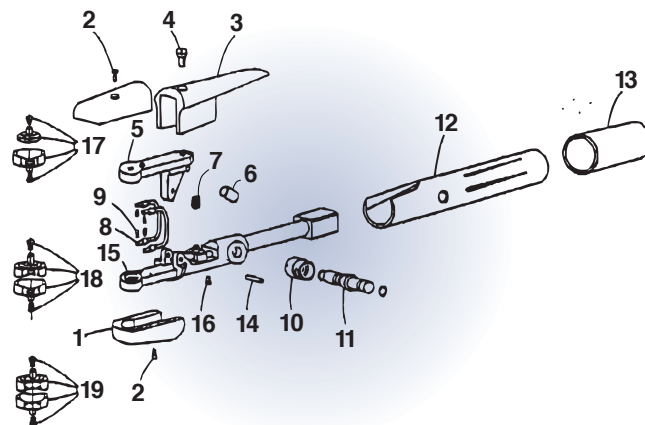
- deeper, cleaner gouge
- less slag removal
- faster operating time

The S-66 will accommodate electrode sizes ranging from 3/8" up to 1". The following is the part number for each torch assembly and parts breakdown:

S-66 TORCH OPTIONS

DESCRIPTION	TORCH LESS CABLE	TORCH W/CABLE
S-66 for 3/8" thru 3/4"	***30036	***40036
S-66 for 3/8", 1/2" and 5/8"	***30046	***40046
S-66 for 3/4"	***30056	***40056
S-66 for 1"	30066	40066

Note: 40059, 40060, 40078, 40088, and 40089 torches are equipped with a No-Air-Valve.
Extra heavy duty cable is also available.



REF.#	DESCRIPTION	PART#
N/S	Body assembly for fixed angle.....	10038
N/S	Upper arm for fixed angle.....	10045
N/S	Allen screws for no-valve.....	10048
N/S	Large button for no-valve.....	10053
N/S	Body assembly for no-valve.....	10059
1	Insulator assembly	10065
2	Insulator screw (2 required).....	10090
3	Lever assembly.....	10073
4	Lever screw.....	10092
5	Upper arm.....	10055
6	Air tube	10094
7	Spring	10088
8	Jumper assembly (2 required).....	10099
9	Jumper screw (4 required).....	10097
	Valve bonnet assembly	10040
*10	a) Bonnet.....	10054
*11	b) Spool assembly	10067
**	c) Spool button (short).....	10061
**	d) Spool (brass center)	10062
**	e) Spool button (long)	10063
**	f) Spool o'ring (2 required)	10064
12	Handle.....	10078
N/S	Spanner wrench	10083
13	Handle extension	10087
14	Pin.....	10056
15	Body Assembly.....	10057
16	Tension Screw	10091
***17	Head assembly for 3/8" thru 3/4" carbon.....	10108
***18	Head assembly for 3/8", 1/2" & 5/8" carbon	10106
***18	Head assembly for 3/4" carbon.....	10107
19	2-Hole head for 3/8", 1/2" & 5/8" carbon	10110
19	2-hole head for 3/4" carbon	10112
19	2-hole head for 1" carbon	10113

* included in valve bonnet assembly

** included in spool assembly

*** assemblies equipped with terminator head

N/S - Not shown

C.H. Symington & Co., Inc.

Main Office: 6063 Franz Road, Ste.103, Dublin, Ohio 43017

Phone: (614) 766-2602 Web site: www.chsymington.com

FAX: (614) 766-2715 E-Mail: symex@aol.com

Warehouse/Shop: 10 Point Street, Carroll, Ohio 43112