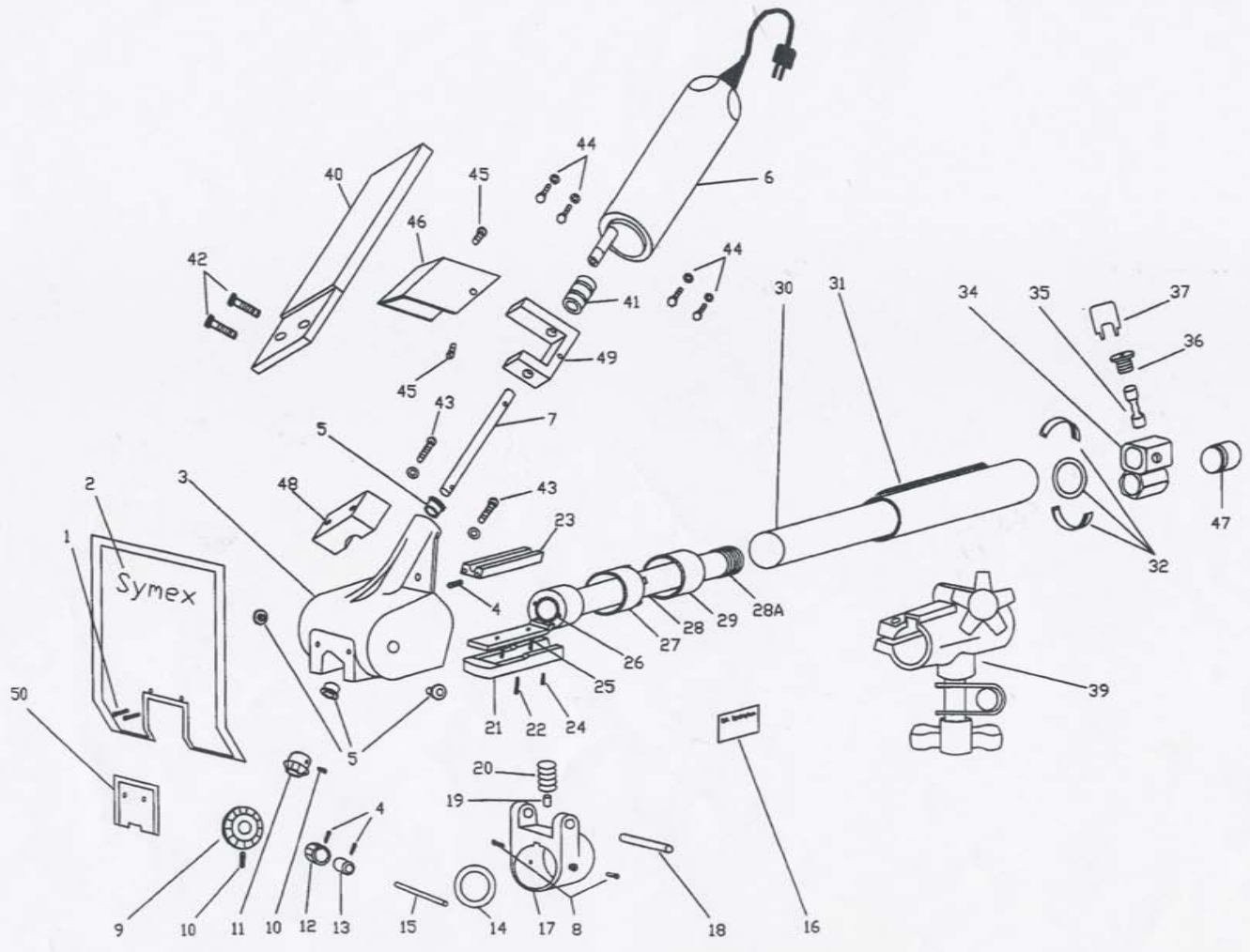


# SYMEX STAR-TRAC II AUTOMATIC GOUGING TORCH



# SYMEX STAR-TRAC II

## AUTOMATIC GOUGING HEAD

REF. #	DESCRIPTION	CAT. #
1	SHIELD SCREWS ( 2 required )	51007
2	STEEL SHIELD	51006
3	ALUMINUM HOUSING standard	51046
3	ALUMINUM HOUSING for Bottom Lava Shield Set	51096
4	ALLEN SCREW 10-32 X 1/4"	51016
5	BRASS BUSHING SET ( includes 4 pcs )	51017
6	DIGITAL SERVO MOTOR W/ 40" Cord & Plug	68799
7	VERTICAL DRIVE SHAFT	51101
8	ALLEN SCREW 1/4"-20 X 1/2" W/ Nylon tip	51019
9	LARGE DRIVE GEAR w/ Screw	51020
10	ALLEN SCREW 10-32 X 5/8"	51021
11	PINION GEAR w/ Screw	51003
12	DRIVE ROLL w/ Screw	51009
13	DRIVE ROLL FIBER BUSHING w/ Screw	51013
14	CLEVIS INSULATOR	51043
15	DRIVE ROLL SHAFT	51014
16	NAME PLATE SET ( includes 3 labels )	51023
17	BRONZE CLEVIS	51024
18	CLEVIS SHAFT	51025
19	SPRING RETAINER PIN ( 2 required )	51026
20	CHROME SPRING	51027
21	BRASS SHOE INSULATOR	51028
22	INSULATOR SCREW	51029
23	SHOE CAP 5/16"	51008
23	SHOE CAP 3/8"	51010
23	SHOE CAP 1/2"	51011
23	SHOE CAP 5/8"	51012
24	SHOE CAP SCREW 8-32 x 3/8 fillister head	51030
25	BRASS SHOE	51047
	BRAZED CURRENT TUBE ASSEMBLY	68793
26	COPPER FRONT COLLAR	51032
27	FRONT COLLAR INSULATOR	51033
28	BRASS CURRENT TUBE	51034
28a	CURRENT TUBE COPPER THREADS	68794
29	RACK TUBE INSULATOR	51035
30	CURRENT TUBE INSULATOR	51036
31	STEEL TUBE & RACK ASSEMBLY	51037
32	INSULATING COLLAR AIR SEAL	51038
34	AIR VALVE BODY W/ INSULATOR	51041
35	SPOOL ASSEMBLY	10067
36	BONNET	10068
37	SPANNER WRENCH	10083
39	TORCH HOLDER ( Bug-o )	51042
39	TORCH HOLDER ( Gullco )	51095
40	SERVO-MOTOR GUARD	51048
41	SILVER SHAFT COUPLING	51104
42	SERVO-MOTOR GUARD SCREWS ( 2 required )	51050
43	SERVO-MOTOR MOUNT SCREWS & WASHERS ( 2 required )	51083
44	SERVO-MOTOR METRIC BOLTS & WASHERS ( 4 required )	51052
45	MOTOR MOUNT COVER SCREWS ( 2 required )	51085
46	MOTOR MOUNT COVER	51084
47	ELECTRODE ALIGNMENT TUBE	51045
48	MOTOR GUARD MOUNTING BLOCK	51049
49	SERVO-MOTOR MOUNT	51103
50	AUXILIARY HI TEMP. LAVA SHIELD 3/8"	51086
50	AUXILIARY HI TEMP. LAVA SHIELD 1/2"	51087
50	AUXILIARY HI TEMP. LAVA SHIELD 5/8"	51088
50	AUXILIARY HI TEMP. LAVA SHIELD 5/16"	51090
NS	3 PIECE LAVA BOTTOM SHIELD SET w/ screws	51091